

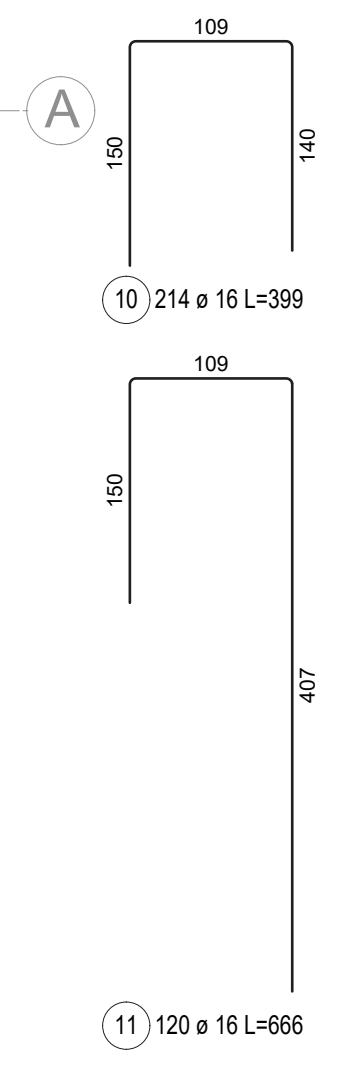
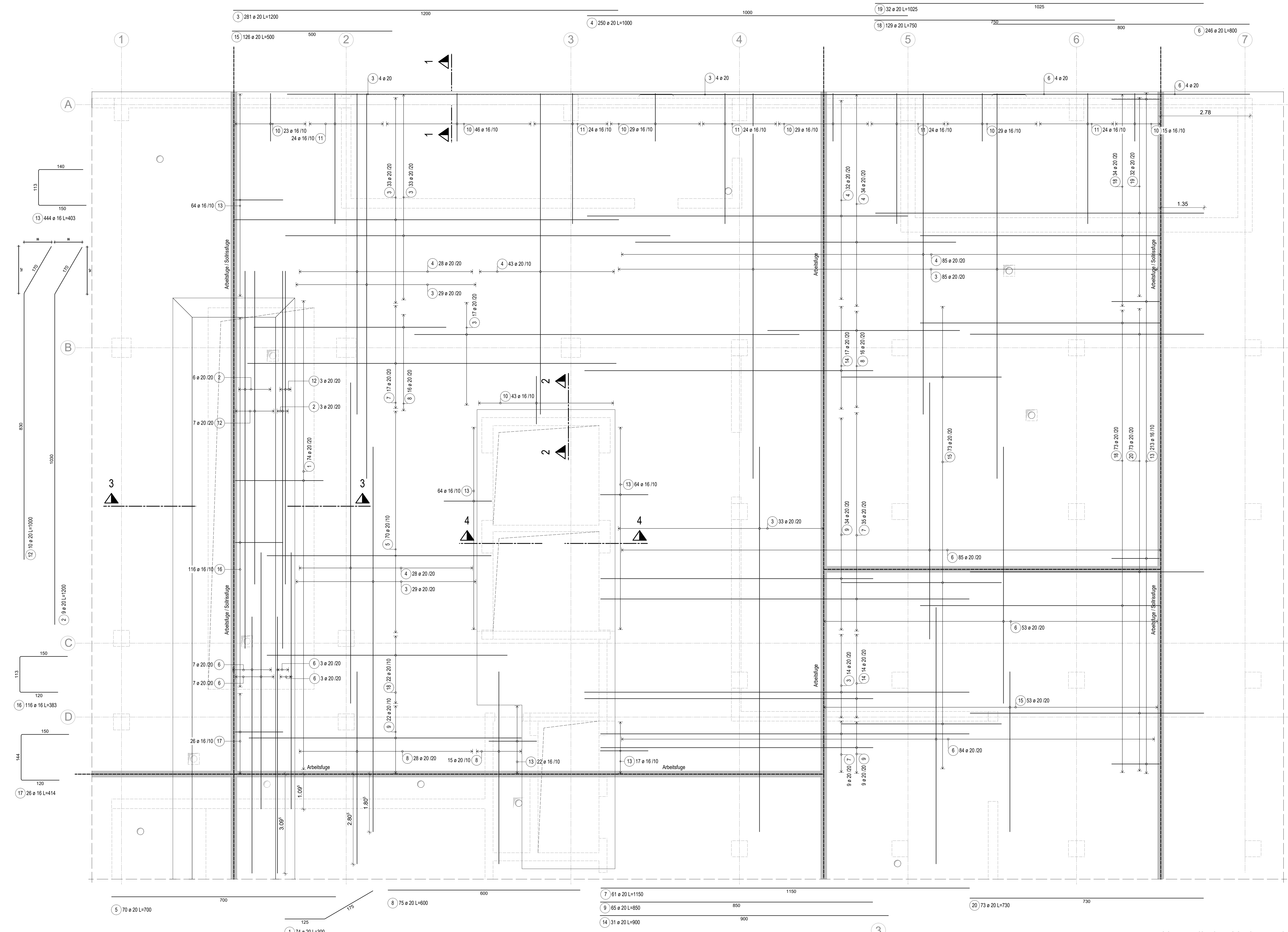
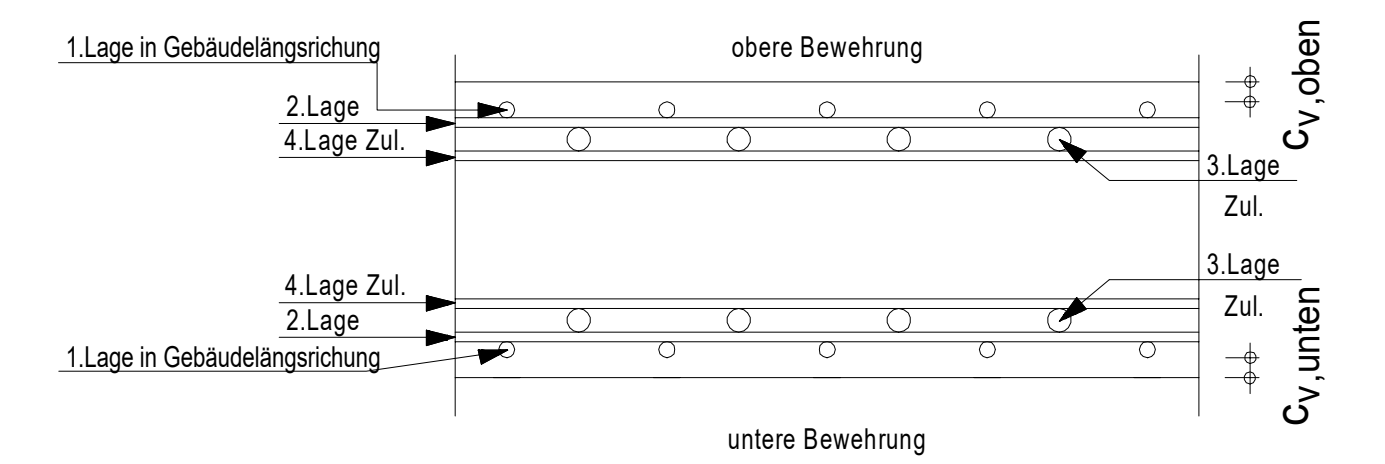
Bodenplatte, Grundbewehrung - Achse 1-7/A-D, untere Lage

M 1:50

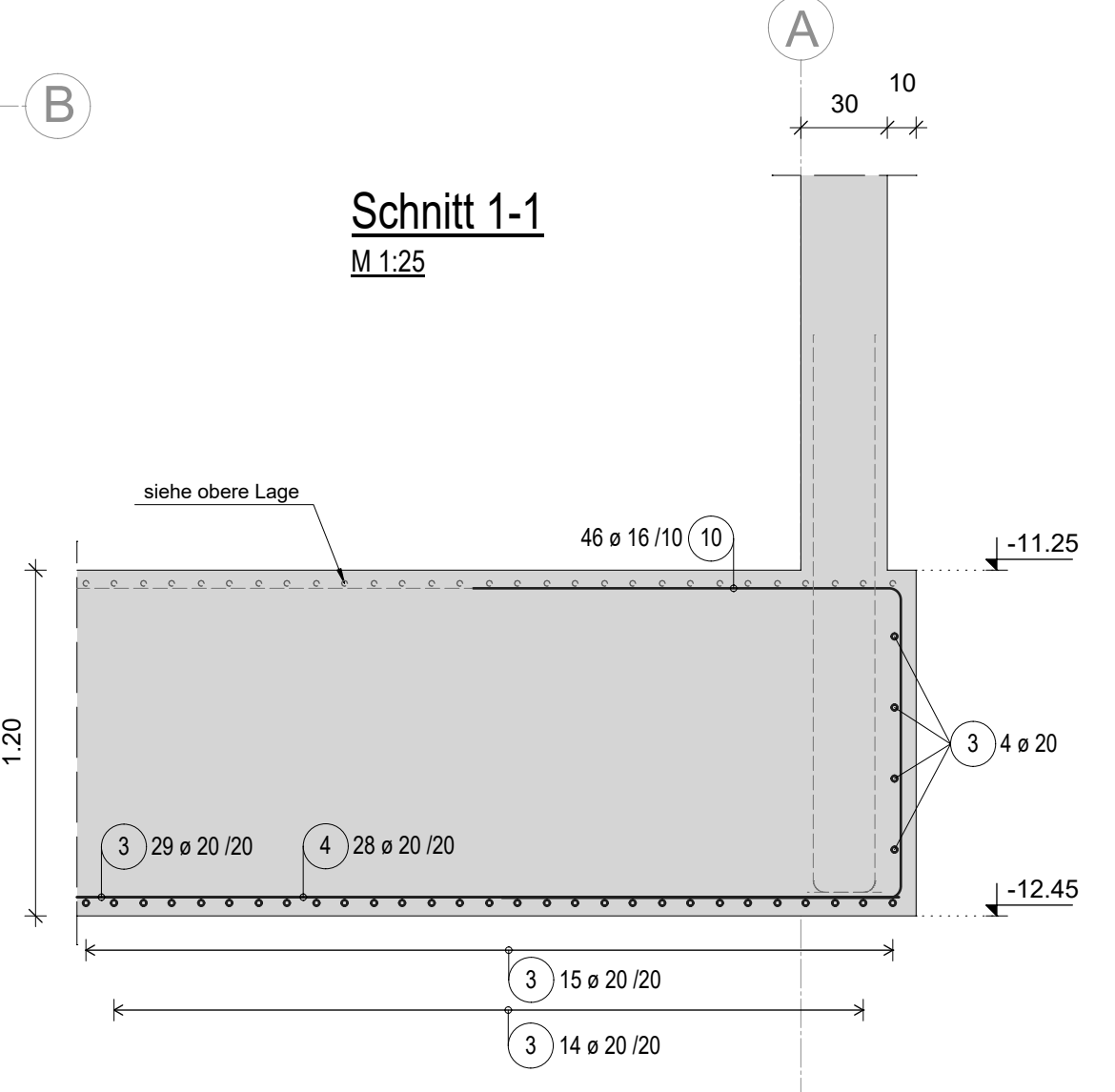
Plan hat Gültigkeit mit:
 Grundbewehrung - obere Lage
 Zulage - untere Lage
 Zulage - obere Lage

Bodenplatte h = 120 cm
 Grundbewehrung Ø 20 - 10 #
 Übergreifungslänge $l_o \geq 100$ cm
 Stöße wenn möglich versetzen

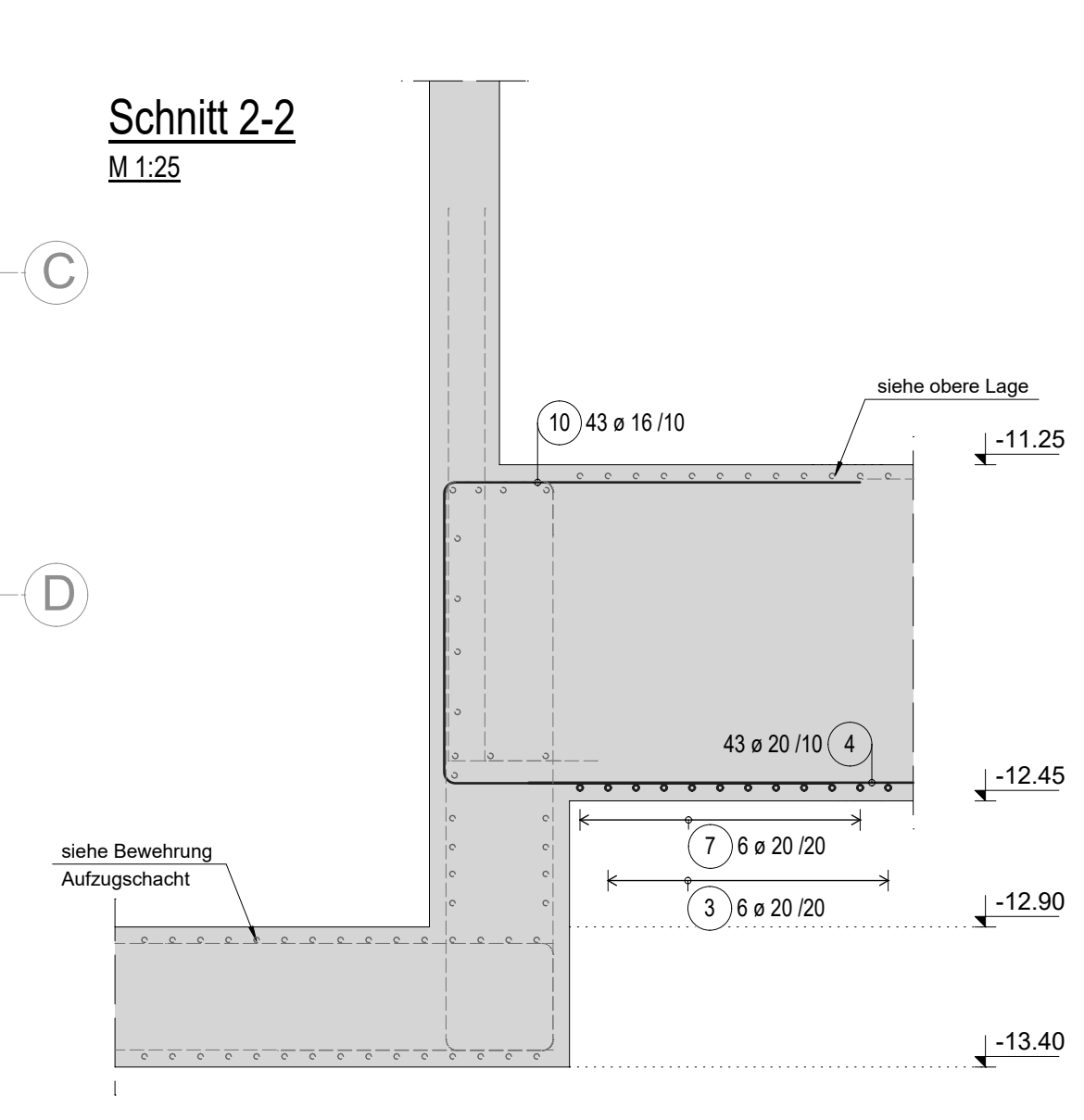
2.+4.Lage
 1.+3.Lage



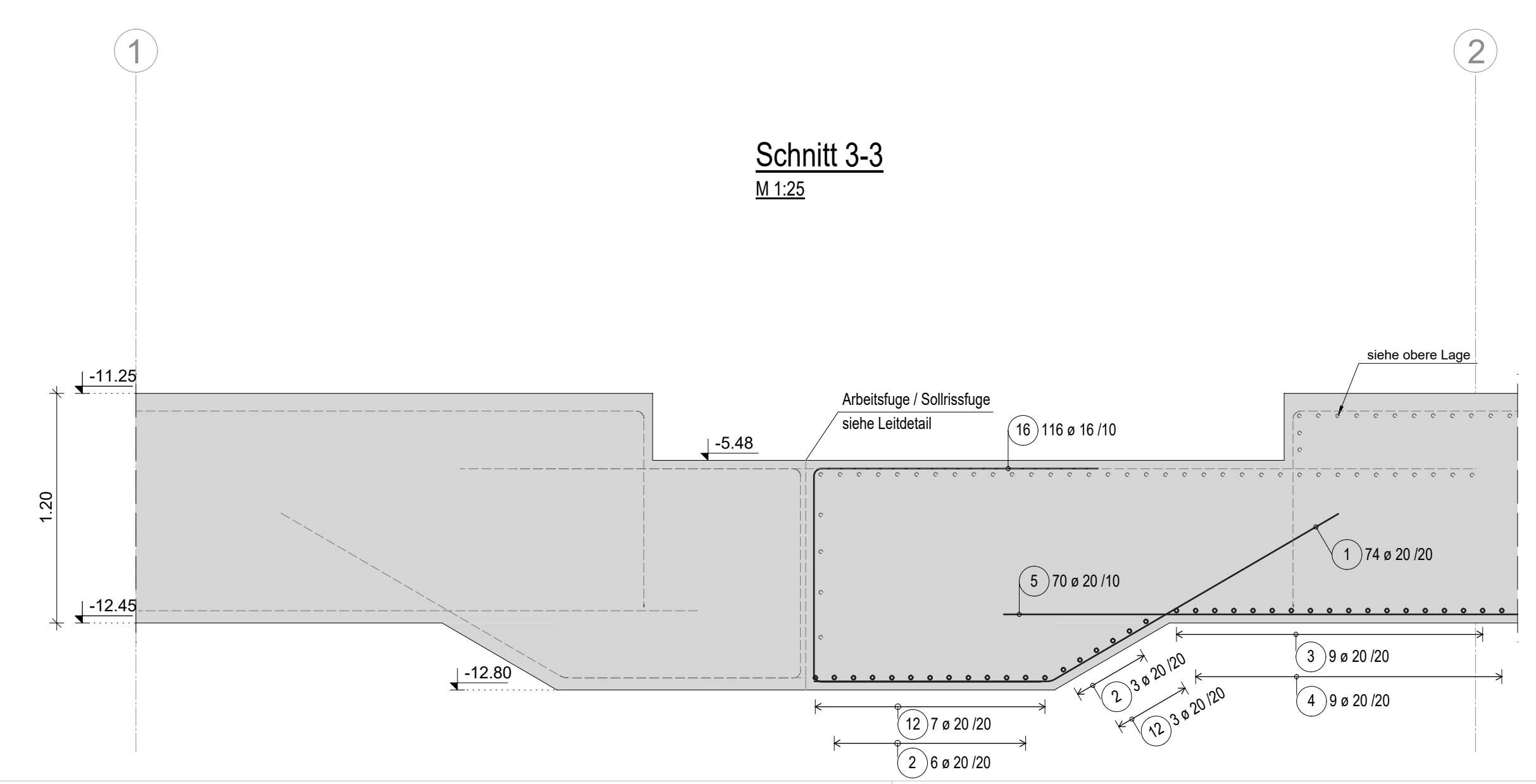
Schnitt 1-1
M 1:25



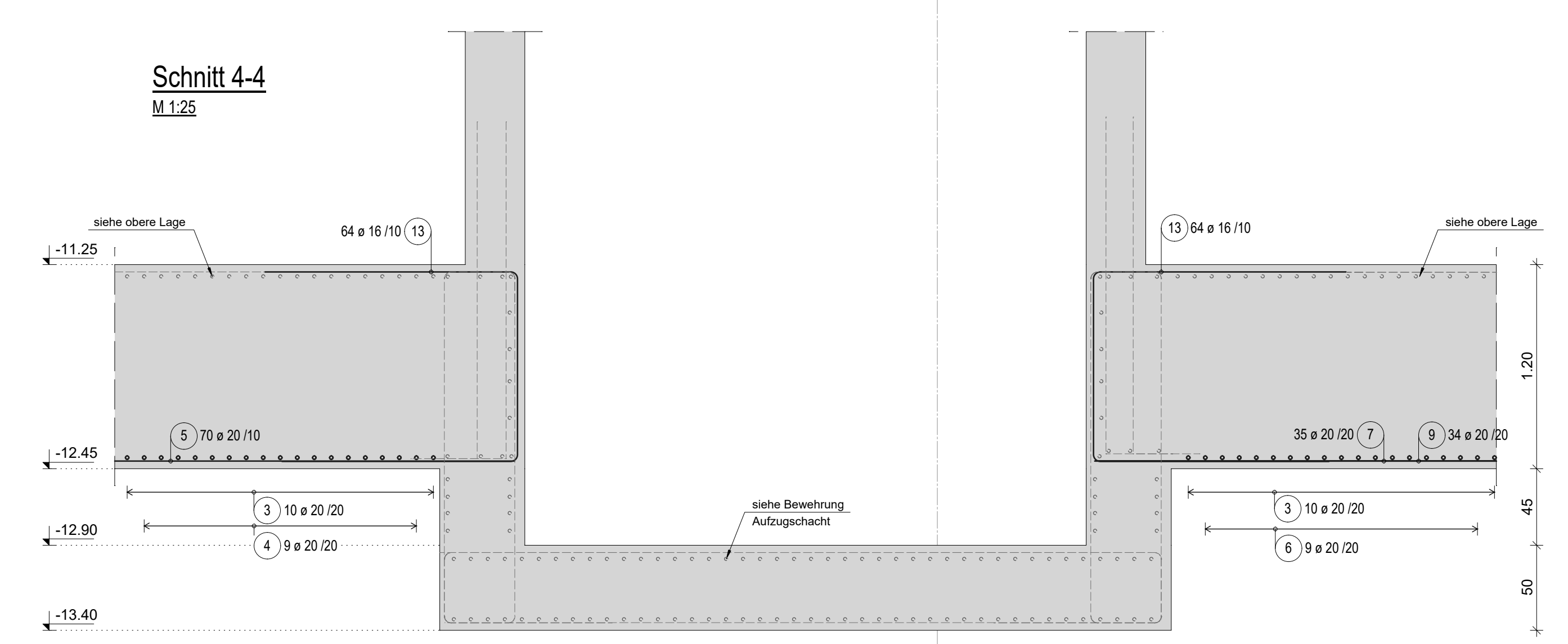
Schnitt 2-2
M 1:25



Schnitt 3-3
M 1:25



Schnitt 4-4
M 1:25



Abstandhalter Verlegeschema
4 Stck./m²

