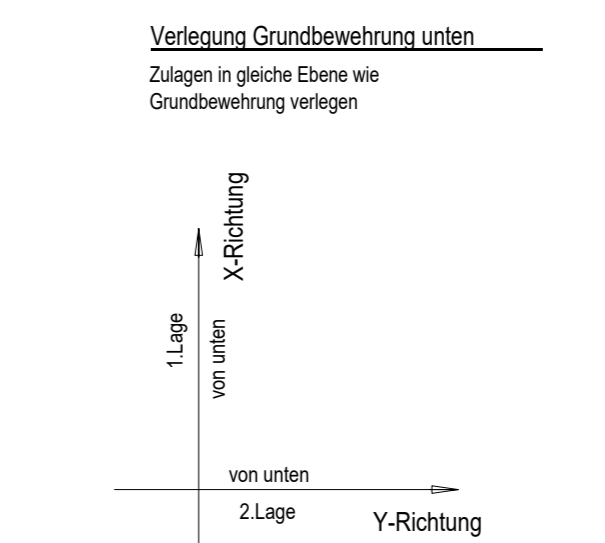
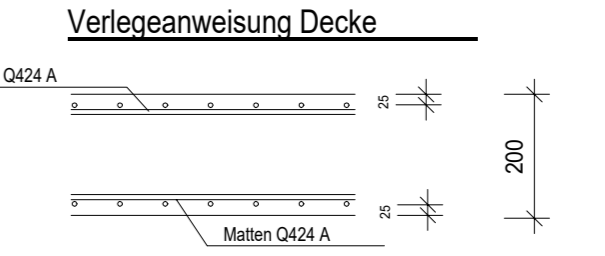
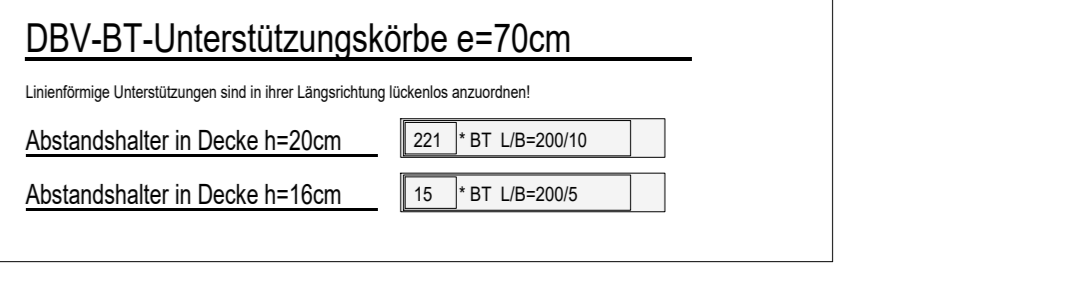
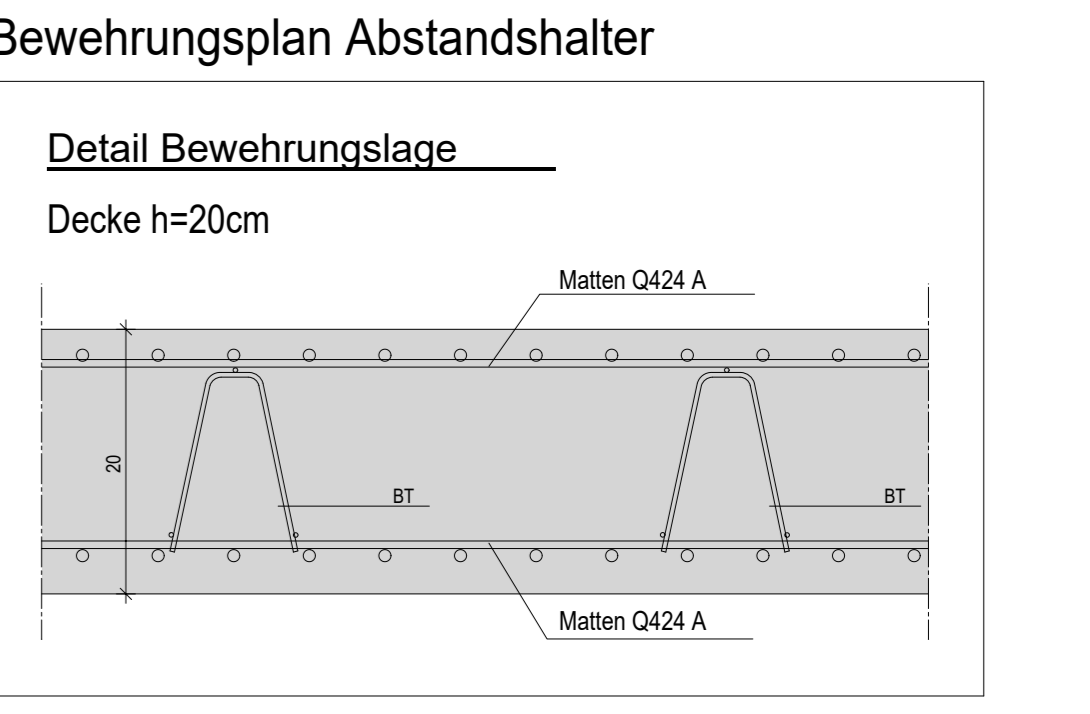


Biegegliedendurchmesser nach DIN EN 1992-1-1
Biegekräfte sind Außenmaße!

Pos.	Stk.	Ø [mm]	Einzel Länge [m]	Bemalte Belegform (Arbeitsmaß)	Gesamt Länge [m]	Masse [kg]	Pos.	Stk.	Ø [mm]	Einzel Länge [m]	Bemalte Belegform (Arbeitsmaß)	Gesamt Länge [m]	Masse [kg]
1	497	8	1.45	□	720.65	284.66	38	3	14	4.35	□	13.05	15.79
2	16	12	12.00	□	192.00	170.50	39	3	14	3.20	□	9.60	11.62
3	4	12	6.05	□	24.20	21.40	40	6	14	3.90	□	23.40	28.31
4	4	12	4.75	□	19.00	16.87	41	23	8	3.45	□	79.35	31.34
5	4	12	7.50	□	30.00	26.64	42	13	8	2.15	□	27.95	11.04
6	12	12	2.25	□	27.00	23.98	43	15	8	1.48	□	22.20	8.77
7	4	12	3.05	□	12.20	10.83	44	6	10	6.60	□	39.60	24.43
8	4	14	5.70	□	22.80	27.59	45	10	10	3.65	□	36.50	22.52
9	8	12	3.35	□	26.80	23.80	46	6	12	3.00	□	21.60	19.18
10	52	12	2.00	□	104.00	92.35	47	23	8	1.31	□	30.13	11.90
11	10	12	1.65	□	16.50	14.65	48	23	8	1.91	□	43.93	17.35
12	4	12	4.10	□	16.40	14.56	49	3	16	6.60	□	19.80	31.28
13	4	12	10.35	□	41.40	36.76	50	3	16	3.85	□	11.55	16.25
14	4	12	3.30	□	13.20	11.71	51	20	10	3.85	□	77.00	47.51
15	4	12	4.45	□	17.80	15.82	52	3	16	7.47	□	22.41	35.41
16	8	12	5.55	□	44.40	39.43	53	24	10	2.84	□	68.16	42.05
17	12	12	8.75	□	105.00	93.24	54	3	14	3.82	□	11.46	13.87
18	10	12	4.70	□	47.00	41.74	55	28	8	1.39	□	38.92	15.37
19	4	12	6.00	□	24.00	21.31	56	3	14	7.50	□	22.50	27.23
20	4	12	7.10	□	28.40	25.22	57	6	14	9.05	□	54.30	65.70
21	4	12	5.00	□	20.00	17.40	58	3	14	8.50	□	25.50	30.86
22	4	12	7.15	□	28.60	25.76	59	4	10	8.80	□	35.20	21.72
23	4	12	3.85	□	15.40	13.68	60	4	10	7.70	□	30.80	19.00
24	4	12	10.40	□	41.60	36.94	61	189	8	1.61	□	304.29	120.19
25	4	12	2.55	□	10.20	9.06	62	9	14	5.07	□	45.63	55.21
26	14	12	1.50	□	21.00	18.65	63	12	10	4.70	□	56.40	34.80
27	28	12	2.15	□	60.20	53.46	64	9	8	2.40	□	21.60	8.53
28	56	8	1.38	□	77.28	30.53	65	9	14	5.80	□	52.20	63.16
29	72	8	1.36	□	97.92	38.68	66	209	10	1.30	□	271.70	167.64
30	303	8	1.43	□	433.29	171.15	67	4	14	6.40	□	25.60	30.96
31	50	8	1.13	□	56.50	22.32	68	4	14	3.85	□	15.40	18.63
32	34	8	1.15	□	39.10	15.44	69	3	14	2.15	□	6.45	7.80
33	10	8	0.94	□	9.40	3.71							
34	92	8	1.00	□	92.00	36.34							
35	21	12	1.00	□	21.00	18.65							
36	32	16	2.00	□	64.00	101.12							
37	53	10	1.00	□	53.00	32.70							

Gesamtmasse [kg]: 2738.18



Verankerungslänge (l _{an}) [cm]				Überankerungslänge (l _{üan}) [cm]			
Ø [mm]	l _{an} [cm]	l _{üan} [cm]	l _{an} [cm]	l _{üan} [cm]	l _{an} [cm]	l _{üan} [cm]	
8	20	25	15	20	15	20	
10	25	30	20	25	20	25	
12	30	35	25	30	25	30	
14	35	40	30	35	30	35	
16	40	45	35	40	35	40	
18	45	50	40	45	40	45	
20	50	55	45	50	45	50	
22	55	60	50	55	50	55	
24	60	65	55	60	55	60	
28	70	75	65	70	65	70	
32	80	85	75	80	75	80	

